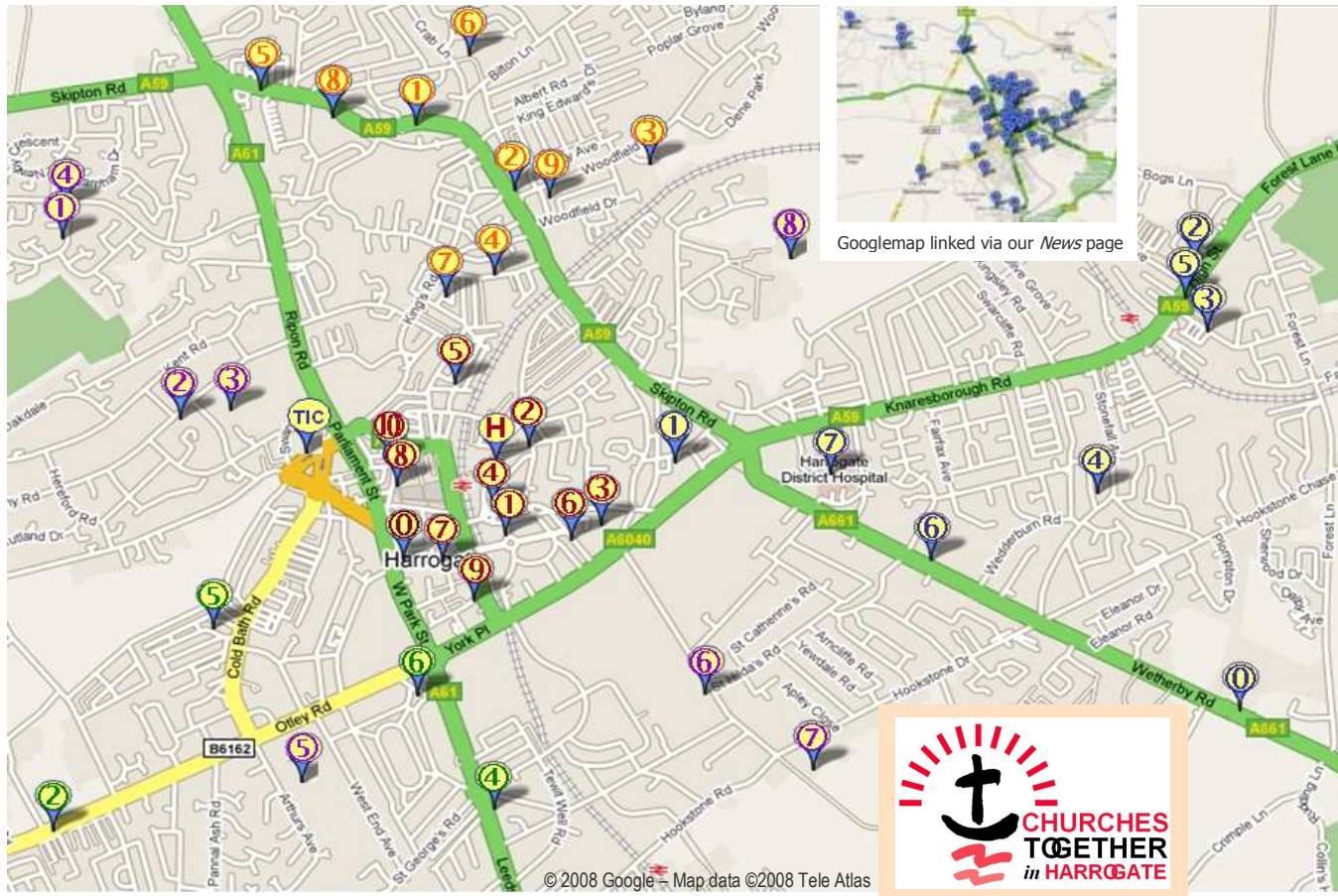


Celebrating Christmas - Together 2008



Googlemap linked via our News page



'Nativity' lights first illuminated on Princes Street, Harrogate, 2007

Duchy & Jennyfield, Schools

- ① Jennyfield Evangelical
- ② St Wilfrid's CE
- ④ Styan Community Centre
- ③ Harrogate Ladies College
- ⑧ Harrogate High School
- ⑤ Grammar School
- ⑥ St Aidan's CE High School
- ⑦ St John Fisher RC High School

Harrogate town centre

- ① Baptist
- ② Elim
- ③ Harrogate New Life
- ④ Life Destiny
- ⑤ Mayfield Community (EFC)
- ⑥ Religious Society of Friends (Quakers)
- ⑦ St Paul's URC
- ⑧ St Peter's CE
- ⑨ St Robert's RC
- ⑩ Wesley
- ⑪ West Park URC
- H HYPeR
- TIC Tourist Information Centre

Bilton, North side

- ① Bar Methodist
- ② Bilton Grange URC
- ③ Calvary Chapel
- ④ Grove Road Methodist
- ⑤ New Life in Christ
- ⑥ St John's CE
- ⑦ St Luke's CE
- ⑧ St Joseph's RC
- ⑨ Woodfield Gospel Hall

Starbeck & Woodlands, East side

- ① Christ Church CE
- ② Starbeck Methodist
- ③ Starbeck Mission
- ④ St Aelred's RC
- ⑤ St Andrew's CE
- ⑥ Woodlands Methodist
- ⑦ Harrogate District Hospital

Leeds Road, South side

- ② Harlow Hill Methodist
- ④ St Mark's CE
- ⑤ St Mary's CE
- ⑥ Trinity Methodist



Leaflet compiled with information correct at the time of publishing - our apologies for omissions, late changes and errors; please see website for latest news and notified changes and additions.

This leaflet is out-of-date on 1 January 2009

Churches in italics enjoy good relationships with Churches Together even if not as members.



Churches Together website lists Induction Loops, disabled toilets, ramped access, plus links to Harrogate Deaf Church and Torch Trust; and to churches in Knaresborough, Nidderdale, Ripon, Wetherby and beyond.

Service times, weblinks, contacts, church halls, schools, rest homes, venue post codes, forward diary and much more on the website.

This leaflet is also downloadable from the Churches Together website.

Map: © 2008 Google - Map data ©2008 Tele Atlas

Published (17 November 2008) for the community and all local churches by Churches Together in Harrogate
loving God and neighbour - together
Sec to CT, Humph Baker: 01423 548778

www.ctharrogate.org.uk

Day by day listing of events and services organised by churches in Harrogate

...have a peaceful Christmas



30 November: Advent Sunday

29/11-13/12 10-2 at Wesley, Harrogate Homeless Project Christmas Tree appeal
Usual service times as noted in the *Harrogate Advertiser*, (see also 21/12) plus:
10:00 Confirmation with the Bishop of Beverley, St Wilfrid's CE
10:30 Choir of Silcoates School, united service with Baptist at West Park
6:00pm Advent carol service, St John's CE, Bilton
6:00pm Choral evensong 'service of light', St Robert's CE, Pannal
6:00pm Advent evensong, St Wilfrid's CE
6:30pm Advent Candlelight Service, St Peter's CE

1-6 December

2-3/12: 10-6.30pm Advent Labyrinth at St Aelred's RC
4/12: 7:30pm, **The Liberator**, Frazer Theatre, **Knaresborough**, £8.50 & £5, family £20. Tel: 340585
5/12: **The Steels** 'Your name in lights' tour, 7:30pm, St John's CE, Bilton; £5
5/12: 10-3, St Mary's CE church centre Christmas open day
6/12: 9:30am - 3:30pm, Myddleton Grange, Ilkley; St Robert's RC Advent Retreat with Fr Simon Lodge, £20, please bring packed lunch
6/12: 11 - 1pm, Christmas Fair, St Luke's; including Traidcraft, light lunches, 50p
6/12: 7:30am - 9am, Hilary Benn @ Leeds Church Institute (LS1 6DG), 0113 245 4700

Sunday 7 December

Usual service times as noted in the *Harrogate Advertiser*, (see also 21/12) plus:
3:00pm Circus Arts outside St Peter's followed by Christmas ConneXions
4:00pm Pannal Methodist, Christingle Service with Pannal School Choir
4:30pm Polish Mass at St Robert's RC

9-12 December

9&10/12: 10-2 at Wesley, Christmas displays and Homeless Project Christmas Appeal
8/12: 7:30pm Ashville College Carol Service at Wesley
9/12: 2:15pm Harrogate Ladies College Lessons and Carols at St Wilfrid's
10/12: **Brian McLaren**, Pavilions Tel: 521662
12/12: **Saltmine**: Three wise men and a baby, St Mark's, £5/£20 544528/521662

Sunday 14 December

Usual service times as noted in the *Harrogate Advertiser*, (see also 21/12) plus:
10:00 Worship led by Tuesday 2 (11-15 group), Jennyfield Evangelical
10:30 Family Nativity service, Woodlands Methodist
3:00pm Christingle, St Luke's CE
3:00pm Travelling Nativity around Pannal
4:00pm Circus Nativity with Harrogate YFC 'Holy Kapow!', Grove Road Methodist
4:00pm and 6:00pm Christingle, St John's CE
6:00pm Bilton Grange URC, Christingle
6:00pm Christ Church CE, Christmas Carol Service
6:30pm Bar Choir Cantata, 'Born A King' excerpts from two works of the same name by John W Peterson and William Lloyd Webber
6:30pm Advent Communion, Wesley
6:30pm Traditional and modern Christian music, Woodlands Methodist
7:00pm Travelling Nativity around Pannal; as 3pm

15-19 December

16/12: 7:30pm **Carol Service**, Bradford Cathedral; support for asylum seekers & refugees
16/12: 5:45pm Carol singers start at Bar & Bilton Library, Fish and Chips at 7:15 at Bar
17/12: 1:00pm Spotlight on Christmas, Wesley
18/12: 10:30am Coffee, mince pies & carols at the Crown Hotel, Harrogate Christian Outreach
18/12: 6:00pm Harrogate Town Centre carol singing led by town centre churches
19/12: 7:00pm Candlelight Carols, Bilton Grange URC

Saturday 20 December

10-4 Shoppers' Rest, town centre, Interact - local churches with Town Pastors
4:00pm Circus Nativity with Harrogate YFC 'Holy Kapow!', Bilton Grange URC
5:15pm **Mayor's Carols** Crescent Gardens, with Fr Jim Leavy and St Aidan's Concert Band
6:00pm St Wilfrid's CE, Vigil Mass, Taizé style, families welcome
6:15pm St Robert's RC, Vigil Mass, exposition and confessions from 5:00
6:30pm St Aelred's RC, Mass
6:30pm St Joseph's RC, Vigil Mass

Sunday 21 December

9:00 Communion at St Mary's CE church hall
9:00 Carols and the Christmas Story, St Andrew's CE
9:30 St Mark's CE
9:30 St Peter's CE
9:30 St Robert's CE, Pannal
10:00 Bilton Grange URC, Junior Church Nativity
10:00 Christ Church CE with Circus Nativity at Junior Church by Harrogate YFC
10:00 Harlow Hill Methodist
10:00 Christmas Guest service, Harrogate New Life *Cedar Court hotel*
10:00 Junior Church plays, Jennyfield Evangelical
10:00 Life Destiny at *the Odeon*
10:00 Musical Christmas, Mayfield Community (*previously EFC*)
10:00 St Aelred's RC
10:00 St James CE, Birstwith
10:00 St John's CE
10:00 St Wilfrid's CE
10:00 Woodfield Gospel Hall; Breaking of Bread; 12 noon Sunday School
10:15 St John Fisher RC
10:30 'Which way to Bethlehem?' united service with West Park URC at Baptist
10:30 Bar Methodist
10:30 Kid's Nativity, Calvary Chapel *Woodfield school*
10:30 Elim, communion
10:30 Grove Road Methodist
10:30 Killinghall Methodist
10:30 New Life in Christ *New Park school*
10:30 Family Carol Service, Pannal Methodist
10:30 Religious Society of Friends (Quakers)
10:30 Starbeck Mission
10:30 St Luke's CE *behind old church, Kings Road*
10:30 St Mary's CE at *St Mary's hall*
10:30 St Paul's URC
10:30 St Paul & St Margaret CE, *Nidd*
10:30 Trinity Methodist
10:30 Wesley
10:30 Woodlands Methodist
10:45 Hampsthwaite Methodist
10:45 Starbeck Methodist
10:45 Community worship and Children's Nativity, St Andrew's CE
11:00 St Joseph's RC
11:00 St Mark's CE
11:00 St Michael & All Angels *Beckwithshaw*
11:00 St Peter's CE
11:30 St Robert's RC
12:00pm Carols at Morrison's, led by St Andrew's CE

3-5pm Angels at St Luke's, worship at 4.00. View angels decorated by local groups and schools; angel themed refreshments and angel crafts; St Luke's CE
4:30pm Carols by candlelight and buffet tea, Jennyfield Evangelical
4:30pm Polish Mass at St Robert's RC
5:00pm Worship, St Mark's CE
5:00pm Lutheran service at St Peter's CE
6:00pm Starbeck school and community carol service, Starbeck Methodist Church
6:00pm Carol service, St John's CE
6:00pm Carols and Readings, St Joseph's RC
6:00pm St Robert's RC
6:00pm St Robert's CE, Pannal
6:00pm Nine lessons and carols, St Wilfrid's CE
6:00pm Woodfield Gospel Hall
6:30pm Candlelit Carol Service, Bar Methodist
6:30pm Elim
6:30pm Mayfield Community Church
6:30pm St Mark's CE
6:30pm Carol service by candlelight, St Peter's CE
6:30pm Family carol service, Woodlands Methodist
7:00pm Communion, Baptist
7:00pm Starbeck Community Carol Service, Mulled wine & mince pies, St Andrew's CE
7:30pm Nine Lessons and Carols, St Mark's CE
8:00pm Christmas THEOS; contemporary worship at St John's CE



Many services and concerts are expected to be full to capacity up to an hour before the quoted start time. Please also allow time for parking.

Christmas Eve

3:30pm & 5:00pm Journey to Bethlehem, St Mark's CE
4:00pm Communion, Bar Methodist
4:00pm Crib services at Christ Church CE and at Harlow Hill Methodist
4:00pm & 6:00pm Christingle, St Andrew's CE
4:00pm Carol service, St Luke's CE
4:00pm & 6:00pm Christmas praise, St John's CE
4:00pm & 5:30pm Christingle, St Peter's CE
4:00pm Christingle, St Wilfrid's CE
4:00pm Toddler service, Woodlands Methodist
5:00pm Carol singing around the wards of Harrogate District Hospital, starting at chapel
5:00pm Children's Mass, St Robert's RC
5:30pm Christingle, St Paul's URC
6:00pm Woodfield Gospel Hall
6:30pm Vigil Mass, St Aelred's RC
6:30pm Vigil children's Mass, St Joseph's RC
7:00pm Mass, carols from 6:30pm, St Robert's RC
7:30pm Killinghall Methodist, Communion
9:00pm BCP Communion, St Robert's CE, Pannal
10:30pm Carols followed by 11pm Midnight Mass, St Aelred's RC
11:15pm United communion service with Starbeck Methodist at Woodlands
11:15pm Communion, Hampsthwaite Methodist
11:15pm Holy Communion, Woodlands Methodist
11:30pm First Eucharist of Christmas, Christ Church CE
11:30pm United Midnight Communion with St Mary's CE at Harlow Hill Methodist
11:30pm United candlelit service with West Park URC at Harrogate Baptist
11:30pm Holy Communion at Pannal Methodist
11:30pm Midnight communion, St Andrew's CE
11:30pm Midnight Mass, St Joseph's RC
11:30pm Midnight Communion, St Mark's CE; Choir by the tree from 11:00pm
11:30pm Midnight Mass, St Peter's CE
11:30pm Midnight Communion, St Robert's CE, Pannal
11:30pm Midnight Mass and carols, St Wilfrid's CE
11:30pm Communion, Trinity Methodist
11:30pm Carols and midnight communion, Wesley
11:30pm Carols followed by 12:00pm Midnight Mass, St Robert's RC
12 Midnight communion, St John's CE and also St Luke's CE



Christmas Day in the morning

8:00 Holy Communion, Christ Church CE, St John's CE, St Mark's CE
8:00 BCP Holy Communion, St Robert's CE (Pannal) and St Wilfrid's CE
8:00 Christmas morning Mass, St Joseph's RC
8:30 Holy Communion, St Peter's CE
9:00 Mass, St Robert's RC
9:45 Family service, Pannal Methodist
10:00 United family carol service with Grove Road at Bar Methodist
10:00 Christmas Day Service, Bilton Grange URC
10:00 Christmas morning all age Eucharist, Christ Church CE
10:00 Family Celebration, Elim
10:00 Family service, Harlow Hill Methodist
10:00 Family Service, Mayfield Community Christmas
10:00 Family service, Starbeck Methodist
10:00 Children's Mass of Christmas morning, St Aelred's RC
10:00 Christmas all-age Communion, St Andrew's CE
10:00 All age Communion, St John's CE, Bilton and at St Mark's CE
10:00 Parish Mass and carols, St Wilfrid's CE
10:30 Mass, St Robert's RC
10:30 United service with West Park URC at Harrogate Baptist
10:30 Parish communion, St Luke's CE
10:30 Family Holy Communion, St Mary's CE
10:30 Christmas Day Family Service, St Paul's URC
10:30 Christmas family service, Trinity
10:45 Family Worship, Woodlands Methodist
10:45 Family Service, Hampsthwaite Methodist
11:00 Carol service, Harrogate District Hospital chapel
11:00 Christmas morning family service, Jennyfield Evangelical
11:00 Mass, St Joseph's RC
11:00 Christmas morning Service, St Peter's CE
11:00 Christmas family carol service, Wesley

Thanks to Church House Trust, Harrogate, for funding this brochure and to ALocalPrinter.com for printing and folding on FSC paper with eco-friendly inks.